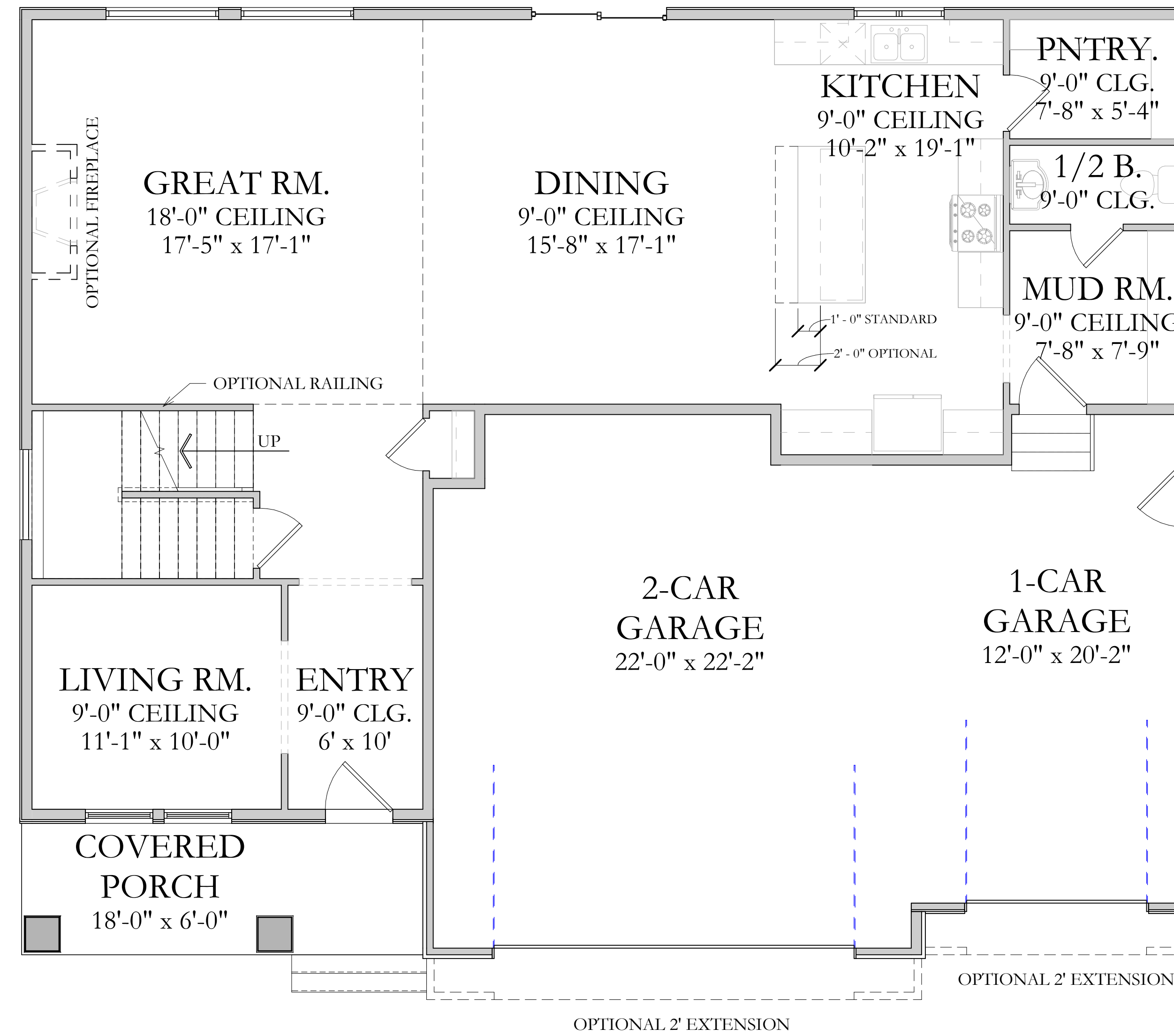


Tracie



MAIN LEVEL



Square Footage:

BASEMENT:	1412 SQFT
MAIN FLOOR:	1300 SQFT
UPPER FLOOR:	1567 SQFT

Total Square Footage:

TOTAL FINISHED:	2867 SQFT
TOTAL:	4279 SQFT
WIDTH:	52'-0"
DEPTH:	42'-0" TO 44'-0"

Disclosure: Home SQFT--both finished and unfinished--are approximate and are subject to change. Please see sales agent for further information.