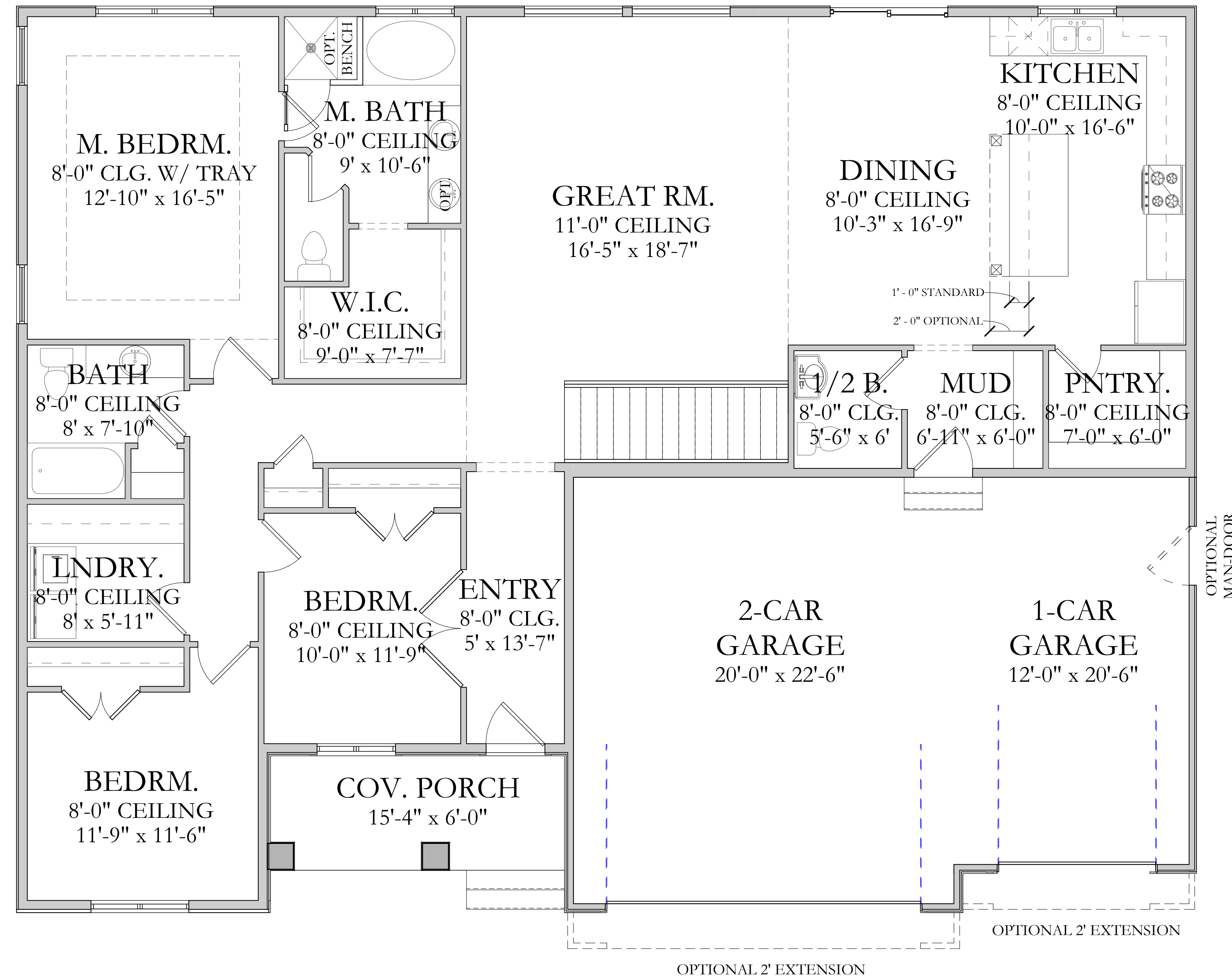


# Autumn



### Square Footage:

BASEMENT:	2,042 SQFT
MAIN FLOOR:	1,937 SQFT
UPPER FLOOR:	

### Total Square Footage:

TOTAL FINISHED:	1,937 - 2,256 SQFT
TOTAL:	3,979 SQFT
WIDTH:	60'-0"
DEPTH:	46'-0" TO 48'-0"

Disclosure: Home SQFT--both finished and unfinished--are approximate and are subject to change. Please see sales agent for further information.