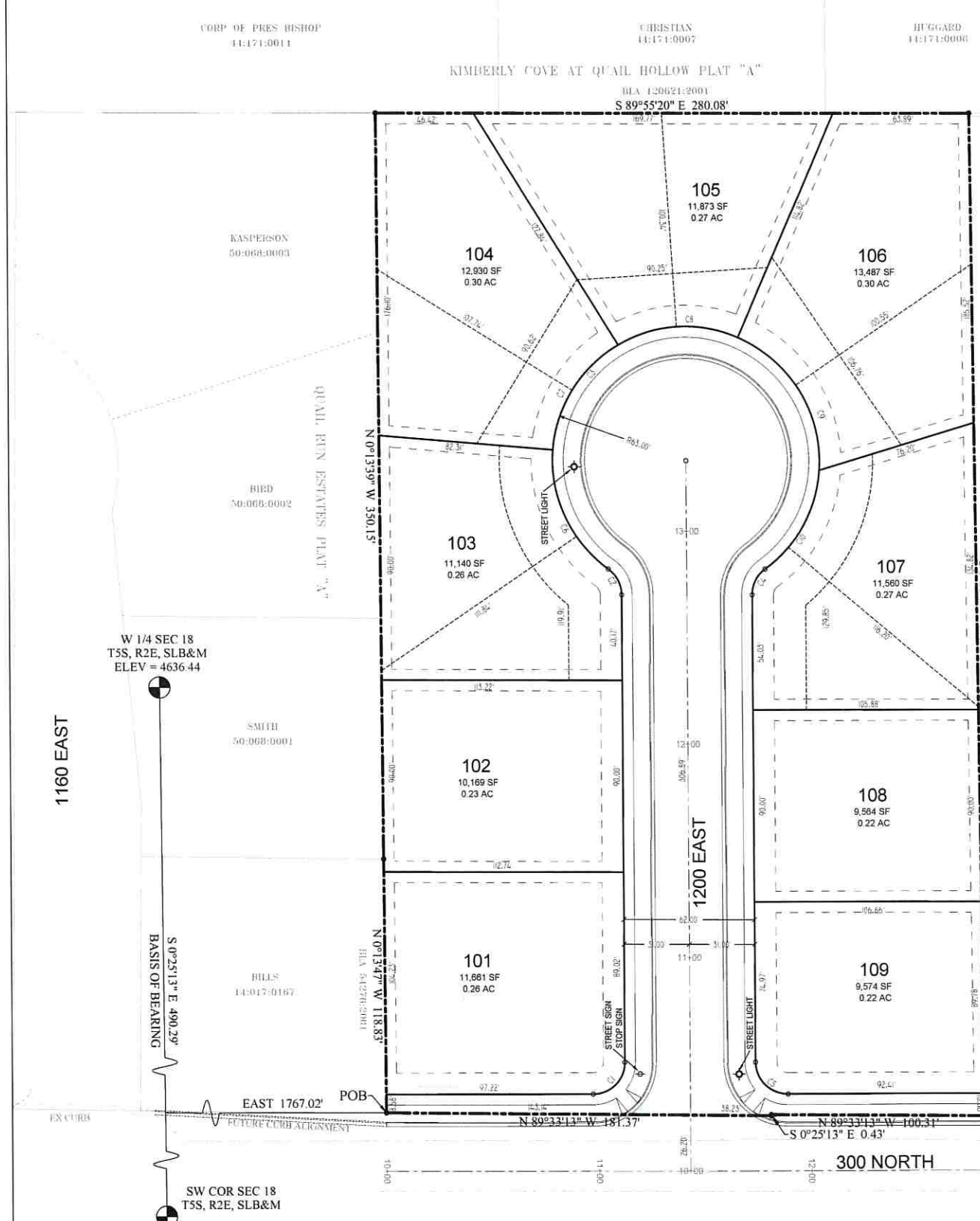


CURVE TABLE

CURVE	RADIUS	LENGTH	DELTA	CHORD	BEARING
C1	15.00	23.53	89°52'45"	21.19	N45°01'03"E
C2	15.00	14.10	53°51'40"	13.59	N26°51'10"W
C3	63.00	316.37	287°43'21"	74.31	S89°55'20"E
C4	15.00	14.10	53°51'40"	13.59	S27°00'30"W
C5	15.00	23.59	90°07'15"	21.24	S44°58'57"E
C6	63.00	64.31	58°29'08"	61.55	N24°32'28"W
C7	63.00	60.49	55°00'34"	58.19	N32°12'26"E
C8	63.00	59.12	53°46'17"	56.98	N86°35'51"E
C9	63.00	77.73	70°41'41"	72.90	S31°10'10"E
C10	63.00	54.72	49°45'40"	53.01	S29°03'31"W

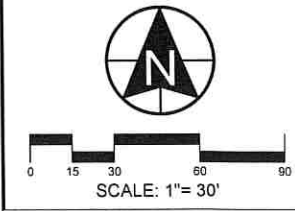


American Fork City Engineering
06/04/2020
mujoma
Approved for Construction



11038 N. Highland Blvd Suite 100
Highland, UT 84003
(801) 642-0119

PEAK MEADOWS SUBDIVISION PLAT A



NO.	DATE	DESCRIPTION	SEAL

ACTION	DATE
FINAL CD	5/20/2020

PEAK MEADOWS SUBDIVISION PLAT A

FINAL PLANS

SHEET NAME	SHEET NUMBER
PRELIMINARY PLAT	C1

